



## Handy Solutions for Common Interior Paint Problems

### Tips from the Rohm and Haas Paint Quality Institute

With the holiday season a memory and warmer weather still months away, now is the perfect time to look around your home and take stock of areas in need of repair or an inexpensive spruce up. For example, a simple change of paint color can rejuvenate a tired kitchen, warm a family or living room or help to create a restful bedroom.

However, before you open that first can of paint, make sure your walls are clean and sound and that includes checking for previous paint problems. Good surface preparation coupled with top quality paint, brushes and rollers will help to insure a long-lasting and beautiful finish.

Finally, we know many homeowners are apprehensive when it comes to choosing color. For assistance and inspiration before purchasing paint or hiring a professional painter, visit [www.paintquality.com](http://www.paintquality.com) to view the new 2009 PQI color trend information available in a handy booklet size to carry with you.

Happy Painting,

Debbie Zimmer, Editor - [dzimmer@rohmmaas.com](mailto:dzimmer@rohmmaas.com)



project  
planner

decorative  
techniques

room  
inspiration

digital  
color wheel

DIY feature  
& archives

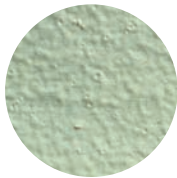
newsletter  
archives

subscribe

unsubscribe

### Foaming or Cratering:

Formation of bubbles and resulting small, round concave depressions when those bubbles break during paint application and drying.



#### Possible Cause:

- Shaking a partially filled can of paint
- Use of low quality paint or very old latex paint
- Applying paint too quickly or excessive rolling and brushing
- Low quality roller cover or wrong nap length
- Applying a gloss or semigloss paint over a porous surface.



#### Solution:

- All paints will foam to some extent during application: however, higher quality paints are formulated so bubbles break while the paint is still wet, allowing for good flow and appearance. Apply gloss and semigloss paints with a short nap roller, and apply a sealer or primer to porous surfaces before painting.

### Mildew:

Black, gray or brown areas of fungus growth on the surface of paint or caulk.



#### Possible Cause:

- Forms most often on areas that tend to be damp and with little or no sunlight, for example, bathrooms, kitchens and laundry rooms.
- Use of a low quality paint, with minimal or no additives to prevent growth
- Painting over a surface where the mildew has not been removed
- Applying paint in "too thin" of a coat.



#### Solution:

- First test for mildew by applying a few drops of household bleach to the discolored area, then rinse; if it disappears it is probably mildew.
- Remove all mildew from the surface by scrubbing with a diluted bleach solution (one part bleach, three parts water), wearing proper safety protection, including rubber gloves and eye protection.
- Rinse thoroughly, prime bare surfaces and paint.
- To protect against mildew, use a top quality latex paint and clean when necessary with bleach/detergent solution. Consider installing an exhaust fan in high moisture areas.

## Brush and Roller Marks from Poor Paint Flow and Leveling

Failure of the paint to dry to a smooth film, resulting in unsightly marks or patterns after the paint dries.



### Possible Cause:

- Use of low quality paint or wrong type of roller cover or low quality brush.
- Adding additional paint to “touch up” partially dried painted areas.
- Re-brushing or re-rolling partially dried painted areas.



### Solutions:

- Use high quality paints to prevent this problem from occurring. Quality paints contain ingredients that enhance paint flow and form a smooth film.
- When using a roller, be sure to use a cover with the recommended nap length for the type of paint being used.
- Use a high quality brush, a poor brush can result in poor flow and leveling.