



Common Paint Problems and Handy Solutions

Tips from the Rohm and Haas Paint Quality Institute



Paint is a valuable ally that can help protect your homes exterior. For the longest lasting protection, take a walk around your home and look for signs of early paint failure. Some paint problems may be caused by using a low quality paint, not preparing the surface properly or painting when it's too hot or cold.

No matter what the cause, now is the perfect time to check those painted outside areas, identify any potential problems, and make valuable corrections before your minor paint problem becomes a larger issue.

Happy Painting,



Debbie Zimmer, Editor

dzimmer@rohmmaas.com

project
planner

decorative
techniques

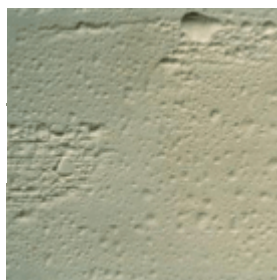
room
inspiration

digital
color wheel

DIY feature
& archives

newsletter
archives

subscribe



Blistering:

Bubbles resulting from localized loss of adhesion and lifting of the paint from the underlying surface.

Possible Cause

- Painting a warm surface in direct sunlight
- Moisture escaping through the exterior walls
- Exposure of latex paint film to dew, high humidity or rain shortly after paint has dried, especially if there was inadequate surface preparation

Solution

- If blisters go down to the substrate, try to remove the source of moisture.
- If blisters do not go all the way down to the substrate, remove them by scraping, then sanding; prime any bare wood and repaint with a quality exterior paint.



Cracking and Flaking

The splitting of a dry paint film through at least one coat, leading to complete failure of the paint. Early on, the problem appears as hairline cracks; later flaking of paint occurs.

Possible Cause

- Overthinning the paint or spreading it too thin
- Use of a low quality paint that has inadequate flexibility
- Painting when it is too cold or too warm, the paint will dry too fast

Solution

- If the paint is tightly adhered to the surface, lightly feather the edges, prime and paint
- If the cracking is all the way down to the surface, then the paint should be removed. Old flaking paint may contain lead, so precautions for lead paint should be followed.



Mildew

Black, gray or brown areas of fungus growth on the surface of paint or caulk.

Possible Cause

- Forms most often on areas that tend to be damp and without sunlight.
- Use of a low quality paint, with minimal or no additives to prevent growth
- Painting over a surface where the mildew has not been removed
- Applying paint in "too thin" of a coat.

Solutions

- First test for mildew by applying a few drops of household bleach to the discolored area, then rinse; if it disappears it is probably mildew.
- Remove all mildew from the surface by scrubbing with a diluted bleach solution (one part bleach, three parts water), wearing proper safety protection, including rubber gloves and eye protection. Power washing is also an option.
- Rinse thoroughly, prime bare surfaces and paint.



Wrinkling

A rough, crinkled paint surface occurring when paint forms a "skin."

Possible Cause

- Paint applied too thickly
- Painting a hot surface, painting on a very hot day, or high humidity levels
- Applying the topcoat to a not completely dried first coat
- Painting over dirty or waxy surfaces

Solutions

- Scrap or sand the surface to remove wrinkled paint.
- Repaint with an even coat of top of the line exterior paint. Make sure the first coat or primer is completely dry before applying the second or topcoat.
- Always follow the manufacturers recommended spread rate.

The Rohm and Haas Paint Quality Institute
P.O. Box 1348
Philadelphia, PA 19109
215.592.3000